



PARTNERSHIP FOR ECONOMIC INCLUSION

.....
ANNUAL REPORT

 PARTNERSHIP
FOR
ECONOMIC
INCLUSION

 THE WORLD BANK
IBRD • IDA | WORLD BANK GROUP

PARTNERSHIP FOR ECONOMIC INCLUSION

ANNUAL REPORT

PROGRESS OVERVIEW IN FISCAL YEAR 2019

World Bank
First Progress Report
March-June 2019



Implemented by:
giz Deutsche Gesellschaft
für Internationale
Zusammenarbeit (GIZ) GmbH





CONTENTS

ABBREVIATIONS	11
EXECUTIVE SUMMARY	15
INTRODUCTION	19
A. Objective and Program Description	20
B. Highlights of Activities/Outcomes	22
1. Country Engagement	23
2. Innovation and Learning	25
3. Global Knowledge Sharing	27
C. Advancing the Partnership	31
D. Aggregated Results	32
ANNEX	40
A.1 PEI Results Framework	40



© Trickle Up

A BBREVIATIONS

PEI	PARTNERSHIP FOR ECONOMIC INCLUSION
CFP	CALL FOR PROPOSALS
BMZ	BUNDESMINISTERIUM FÜR WIRTSCHAFTLICHE ZUSAMMENARBEIT UND ENTWICKLUNG (BMZ) (FEDERAL MINISTRY FOR ECONOMIC COOPERATION AND DEVELOPMENT)
COP	COMMUNITY OF PRACTICE
DIME	DEVELOPMENT IMPACT EVALUATION (DIME) RESEARCH GROUP
EI	ECONOMIC INCLUSION
EOI	EXPRESSION OF INTEREST
FY	FISCAL YEAR
GIZ	DEUTSCHE GESELLSCHAFT FÜR INTERNATIONALE ZUSAMMENARBEIT (GIZ) GMBH
IAC	INTERIM ADVISORY COUNCIL OF THE PARTNERSHIP FOR ECONOMIC INCLUSION
IBRD	INTERNATIONAL BANK FOR RECONSTRUCTION AND DEVELOPMENT
IDA	INTERNATIONAL DEVELOPMENT ASSOCIATION
IFC	INTERNATIONAL FINANCE CORPORATION
M&E	MONITORING AND EVALUATION
MDTF	MULTI-DONOR TRUST FUND
NGO	NON-GOVERNMENTAL ORGANIZATION
SDGs	SUSTAINABLE DEVELOPMENT GOALS
WBG	WORLD BANK GROUP
SC	STEERING COMMITTEE







© Trickle Up

EXECUTIVE SUMMARY

This Partnership for Economic Inclusion's (PEI) Annual Report reviews activity conducted in Fiscal Year (FY) 2019, which was a critical transition period as the Partnership for Economic Inclusion operationalized its founding vision following its establishment. During the reporting period, efforts focused on strengthening partnership and collaboration arrangements with organizations in the partnership network, revamping knowledge-sharing priorities and supporting deeper country engagement, particularly with World Bank operations. The PEI seeks to ensure that activities are demand-driven and relevant at the country level. The transition period established a solid basis for the consolidation and future expansion of the PEI.

The PEI is a new global partnership with a mission to support the adoption of national economic inclusion programs that increase the earnings and assets of extreme poor and vulnerable households. Since the Administrative Agreement was signed on March 26, 2019, the PEI has focused on developing an ambitious work-plan in full consultation with the Interim Advisory Council (IAC) and the Steering Committee (SC).

During this transition phase, efforts focused primarily on two of the three work-plan pillars, Country Engagement and Global Knowledge Sharing. These pillars set a mutually reinforcing basis for the success of the PEI. At the time of writing, the PEI is seeing early signs of success from this transition period, as evidenced by the Call for Proposal (CfP) response and energy around the State of Economic Inclusion Report and Global Learning Event for FY20.

The PEI Management Team takes the opportunity to acknowledge the generous support of the founding donors. The PEI is supported by a World Bank Multi-Donor Trust Fund (MDTF) mechanism, with initial funding provided by Co-Impact¹ and the German Development Cooperation (Deutsche Gesellschaft für Internationale Zusammenarbeit (GIZ) GmbH) commissioned by and on behalf and for the account of the German Federal Ministry for Economic Cooperation and Development (BMZ).

¹ Co-Impact is a fiscally sponsored project of New Venture Fund.







© CGAP



I NTRODUCTION

This annual report details the operational activities of PEI's MDTF, from the signing of Administrative Agreements in March 2019 to June 2019. During this start-up period, the PEI team focused on strengthening partnership and collaboration across the community of practice (CoP), cementing the infrastructure for improved knowledge sharing, and, most critically, supporting close country engagement with World Bank operations. The PEI continues to ensure that all activities are demand-driven and relevant for country operations. By all objective measures, the transition period is setting a solid basis for the consolidation and future expansion of the PEI.

Note that since this is the first annual report, some information included extends beyond the financial year end to better describe the early stage of MDTF operationalization. As stated in the PEI Administrative Agreement, future reports will be limited to the exact reporting periods for September and February.



A.

OBJECTIVE AND PROGRAM DESCRIPTION

The PEI is a partnership that supports the adoption of national economic inclusion programs that increase the earnings and assets of extreme poor and vulnerable households. The PEI brings together global stakeholders to catalyze country-level innovation and global knowledge. It is hosted by the Social Protection and Jobs Global Practice of the World Bank.

Meeting a growing global demand for economic inclusion programs

The PEI responds to the global momentum to strengthen inclusive and sustainable growth to Leave No One Behind. This is reflected in the Sustainable Development Goals (SDGs) to “end poverty in all its forms everywhere” by 2030. This momentum plays out in a dynamical global context that is changing labor market participation, employment, and the nature of social protection for the poorest. Going forward, such changes are shaping the social contract between governments and citizens, and the role of future economic inclusion.

The PEI supports cost-effective and scalable investments for extremely poor and vulnerable populations. In doing so, the PEI prioritizes the empowerment and agency of women through gender-intentional program design as a cross-cutting priority. Economic inclusion is defined as multi-sectoral interventions that support households to achieve sustainable livelihoods and increase their incomes, resilience, and assets, while building human capital and promoting social inclusion. To meet global demands, the PEI leverages its partnership network, which includes practitioners, policy-makers, development partners, and research organizations. The partnership network is critical in terms of contributing to evidence-based good practice, crowding in expertise, and providing a platform to refine and share cutting-edge knowledge on economic inclusion.

A defining opportunity is the potential to link economic inclusion programs to a wide portfolio of World Bank operations. Increasingly, World Bank clients seek to strengthen economic inclusion programming through country strategies that focus on expanding job opportunities, social protection, and financial inclusion, among other priorities. The World Bank currently provides over US\$15 billion for safety net financing to 90 countries, and the PEI seeks to leverage these opportunities with links already established to a variety of national programs, including Malawi, Kenya, Ethiopia, Pakistan, Paraguay, and India.

Towards a new generation of economic inclusion approaches

The partnership builds on the considerable success of “graduation programs” worldwide, pioneered by BRAC in Bangladesh and promoted globally by the Consultative Group to Assist the Poor (CGAP), the Ford Foundation, and others. Since 2002, graduation programs have been implemented in more than 50 countries, providing a time-bound package of interventions spanning social assistance, financial inclusion, livelihoods, coaching, and empowerment. These programs have demonstrated promising impacts in income and asset generation, poverty reduction, and food security.

The PEI supports a new generation of economic inclusion approaches to operationalize the scale-up of government-led programs. This builds on emerging lessons from economic inclusion programs, some of which are in early stages of testing and adaptation, while others are scaling-up fast or have ambitions to scale up. The PEI seeks to test innovations in program design and implementation in selected countries, harvest lessons from these innovations, support country learning, and promote global knowledge-building on emerging best practices.

Initially the PEI will support three pathways to scale. Through these inter-connecting pathways, innovations in economic inclusion will be integrated within national social protection and anti-poverty programs:

First, integrating strategies to promote more and better job and livelihood opportunities. For the poorest and most vulnerable, access to employment tends to be informal, risky, and often limited by labor constraints. Therefore, a range of relevant experiences (including in rural development, urbanization, youth) can help unlock entry points for improved job and livelihood opportunities.

Second, improving the effectiveness of social safety net systems. Across the world, there is an increasing emphasis on expanding “cash plus” program interventions, which build on established programs. Impact evidence shows that transfers to safety nets can promote economic opportunities, with beneficiaries more likely to expand own-businesses and own-farm labor.

Third, strengthening program delivery systems (e.g., beneficiary identification, payments, social accountability) as a mechanism for improving access to economic inclusion. This implies a strong role for financial inclusion.

Catalyzing country-level innovation and global knowledge

The PEI work program is organized around the following three priorities, which are designed to be mutually reinforcing:

Country Engagement: harnessing global expertise to provide technical advice and grant support for selected governments to design, implement, scale-up, and continuously improve their economic inclusion programs.

Innovation and Learning: leading innovation and research activities focused on the most critical gaps in knowledge and practice. Disseminating findings and developing knowledge products will help improve the performance of government programs and inform global operations and advisory services.

Global Knowledge Sharing: strengthening knowledge exchange, including through the establishment of a PEI virtual platform and identifying and distilling good practices, guidelines, tools, and training for diverse audiences and contexts.





B.

HIGHLIGHTS OF ACTIVITIES/ OUTCOMES



“

WE BELIEVE IT IS ONLY BY ADVOCATING FOR THE MOST VULNERABLE OF THE POOR AND EVIDENCE-BASED SOLUTIONS THAT WE WILL ENSURE NO ONE IS LEFT BEHIND. [...] I AM PROUD TO SUPPORT THE WORK OF THE WORLD BANK'S PARTNERSHIP FOR ECONOMIC INCLUSION ON SUPPORTING GOVERNMENTS TO SERVE THE NEEDS OF THEIR POOREST POPULATIONS THROUGH SOCIAL PROTECTION.

— LINDSAY COATES, MANAGING DIRECTOR OF BRAC'S ULTRA-POOR GRADUATION INITIATIVE, JULY 2019

”

The PEI has developed and begun to implement an ambitious work-plan, established in close cooperation with the Interim Advisory Council and the Steering Committee. Given the PEI's focus on two intertwined results--the adoption of scaled economic inclusion programs led by governments and the creation of a cutting-edge platform for global learning and knowledge--the work-plan seeks to leverage the partnership, build synergies across program components, and enhance program communications. During this transition phase, efforts focused primarily on Country Engagement (Pillar 1) and Global Knowledge Sharing (Pillar 3) of the work-plan. These pillars are seen as the mutually reinforcing basis for the success of the partnership. The PEI conducted preliminary groundwork on the Innovation and Learning (Pillar 2), with the expectation to fast-track this work in FY20.

1. Country Engagement

The objective of the Country Engagement pillar is to provide technical advice and grant support for selected governments to design, implement, scale-up, and continuously improve their economic inclusion programs. In this first year, most Pillar 1 efforts focused on establishing PEI's Call for Proposals process and streamlining the process for "just in time" country engagements. Clear and detailed planning under this pillar is setting the foundation for a strong partnership going forward.

PEI Call for Proposals

Preparation for the PEI Country CfP was a major focus during the reporting period. The PEI Management Team invested considerable time to engage the IAC and SC on process design, detailed planning on an operations manual, and agreement on protocols for the process.

In July 2019, the PEI launched its inaugural CfP to identify and support up to 10 economic inclusion programs that will benefit

from a combination of grant financing and technical support. These PEI Country Engagement bank-executed grants will support a portfolio of geographically and programmatically diverse government-led economic inclusion programs that are or will be underway shortly, leverage substantial funding, offer program participants a sufficient economic inclusion package (based on existing in-country and global evidence and data), and contribute to the global PEI learning agenda. Engaging external technical expertise is a cornerstone of the CfP process.

A total envelope of up to US\$1.8 million was allocated for bank-executed grants, with the intention to select between six and 10 grant awardees. The CfP advised a maximum individual grant of US\$180,000 with a duration of up to two years. Eligible bank-executed activities include supporting governments and their development partners through diagnostics, program design, technical assistance, training, capacity building, and learning and research. The first CfP was open to initiatives in Individual Development Account (IDA)-eligible, IDA-blend and International Bank for Reconstruction and Development (IBRD) countries. To be considered for the grant, proposal applicants needed to submit an Expression of Interest (EoI) by August 15. To facilitate this process, the PEI developed a detailed operations manual with guidelines for applicants. Careful preparation by the PEI Management Team and outreach with the PEI IAC and SC was foundational to the early success signs of the CfP (See Box 1). PEI recently closed its CfP and is in the process of selecting PEI Grant Awardees.

Box 1: Call for Proposal Response at a Glance

- This first CfP generated a total of 46 submissions from 37 countries – demonstrating coverage in every region and revealing strong demand to operationalize economic inclusion across the World Bank Group (WBG).
- Submissions spanned IDA, IDA-blend and IBRD countries and originated from all WB lending regions.
- Submissions were received from six Global Practices including Social Protection and Jobs; Agriculture; Social Development; Social, Urban, Rural and Resilience; Poverty; and Equity
- Submissions were also received from the Development Impact Evaluation (DIME) Research Group and the International Finance Corporation (IFC).

“Just in Time” Strategic Country Engagement

In addition to advisory work for the CfP countries, the PEI Management team invested time to consider “just in time” strategic country engagement. There is a strong demand for country-level advisory services, from all regions and from low-income (IDA) and middle-income (IBRD) countries. The team is developing protocols to respond to this demand and to leverage expertise and resources within the core team and across the partnership network to respond to ‘just in time’ country-level requests for help with project design, implementation, and learning.

2. Innovation and Learning

The Innovation and Learning pillar focuses on supporting new research and distilling evidence on economic inclusion. This pillar remains a work in progress, requiring further time and discussion with PEI members to develop a multi-year work program.

To achieve large-scale, transformative economic inclusion programming, **critical knowledge gaps need to be filled through the generation of new evidence and lessons learned, syntheses of evidence and learnings, and communication and dissemination of good practices.** The lessons and outputs are intended to feed directly into design and implementation advisory work for the PEI’s Country Engagement in PEI grant countries and elsewhere. Evidence and lessons generated through the Innovation and Learning workstream are also designed to provide practical, actionable, and evidence-based implementation tools to the partnership network.

Gender

The PEI’s five-year strategy includes a cross-cutting priority to

help governments scale-up economic inclusion programs that promote extreme poor and vulnerable women’s economic and social empowerment. More specifically, the goal is to help women access and control resources, improve household earnings and health conditions, build awareness and self-confidence, participate in community activities, and invest in children to break the intergenerational cycle of poverty.

During this reporting period, the PEI collaborated with key stakeholders in economic inclusion and gender (donors, community of practice organizations, researchers, and World Bank gender experts). This work emerged with the PEI Management Team’s participation in the Skoll World Forum in April, which brought together leaders from eight organizations including The BOMA Project, BRAC, Concern Worldwide, Fundación Capital, Trickle Up, Trinity College, Village Enterprise, and the PEI to discuss the intersection of economic inclusion approaches and women’s economic empowerment. The PEI and other leaders discussed ways to accelerate progress and contribute to SDG 5. In FY20, the PEI will further reflect on the strategy of this collaboration in the future work program.

Costing

Governments facing fiscal constraints need more information on the costs of economic inclusion programming. The PEI’s multi-year work-plan prioritizes laying the foundations for future work on costing exercises with government partners.

During this reporting period, the PEI has continued conversations with worldwide experts from within the partnership network to determine good practices in collecting costing information from programs implementing economic inclusion programs. The PEI team is planning to consult with World Bank and other costings specialists about how to capture costing information in the State of Economic Inclusion Report 2020 (see below). Ultimately, **capturing better costing information on programs will be essential to inform innovative program design to achieve maximum cost-effectiveness and impact.** The PEI will draw on its longstanding linkages with Innovations for Poverty Action and Northwestern University for this work.

Better understanding of Operational Contexts and Population Segments

Governments work in varied contexts and with different policy priorities and need more information on designing economic inclusion packages for different population segments and contexts.

Over this reporting period, the PEI has facilitated conversations on implementation variations and the lessons learned from

Costing

Governments facing fiscal constraints need more information on the costs of economic inclusion programming. The PEI's multi-year work-plan prioritizes laying the foundations for future work on costing exercises with government partners.

During this reporting period, the PEI has continued conversations with worldwide experts from within the partnership network to determine good practices in collecting costing information from programs implementing economic inclusion programs. The PEI team is planning to consult with World Bank and other costings specialists about how to capture costing information in the State of Economic Inclusion Report 2020 (see below). Ultimately, capturing better costing information on programs will be essential to inform innovative program design to achieve maximum cost-effectiveness and impact. The PEI will draw on its longstanding linkages with Innovations for Poverty Action (IPA) and Northwestern University for this work.

Better understanding of Operational Contexts and Population Segments

Governments work in varied contexts and with different policy priorities and need more information on designing economic inclusion packages for different population segments and contexts.

Over this reporting period, the PEI has facilitated conversations on implementation variations and the lessons learned from programming for different segments. For example, during the reporting period the PEI became a co-convenor of the Poverty Alleviation Coalition led by the United Nations High Commissioner for Refugees (UNHCR) (<https://alleviate-poverty.org/>). This coalition brings together 12 non-governmental organizations (NGOs) working towards a common vision of increasing self-reliance and economic and social inclusion of refugees and host communities by sustainably increasing income-earning opportunities. The goal is to alleviate the poverty of half a million households consisting of refugees and host communities within five years through holistic economic inclusion interventions that combine humanitarian and development assistance. The PEI has been engaged in similar initiatives focused on disability and early childhood development.

3. Global Knowledge Sharing

The objective of the Global Knowledge Sharing pillar is to strengthen the flow of knowledge on economic inclusion for more effective country engagements and to position the PEI as a cutting-edge global platform for learning and knowledge. During this reporting period, the PEI dedicated significant

resources to fast track and prioritize work in this area. The team has focused its efforts on building the first blocks of a dynamic knowledge management system that allows for the curation and dissemination of information and materials as well as technical resources to guide the process of contextualization, design, and implementation of economic inclusion programs at scale.

Communication and Visibility: Website and SharePoint Site

In developing the PEI's knowledge and communications strategy, the team established a dedicated website (www.peiglobal.io) hosted on a World Bank portal. This website establishes the PEI's web-presence and will become a knowledge and practice hub for the field. With a website established, the team will now focus on broader website and social media strategies as well as content development. The PEI will continue to use FinDev Gateway and the Social Protection Platform (<https://socialprotection.org>) as repositories for the partnership key documents and will also continue using socialprotection.org to hold and advertise events such as webinars. In addition, the PEI team created an IAC SharePoint site, which will serve for internal IAC communications. The team has created the same for Steering Committee members.

Economic Inclusion 101 Resources

The PEI Management Team has developed Economic Inclusion (EI) 101 resources for use by PEI members. Resources include the PEI 2-page overview, stock PowerPoint slides, a short reading list, and help-desk resources—responding to inquiries from within the WBG and beyond. The PEI team continues to circulate bi-monthly newsletters reaching over 1,000 subscribers and highlighting implementation experience, cutting-edge research, and other resources from the partnership network. The PEI is expected to revamp the newsletter during the next fiscal year. Finally, the team has completed a full bibliography on economic inclusion with over 300 references.

Concept Note for the State of Economic Inclusion Report

The PEI team completed the concept note for the *State of Economic Inclusion (SEI) Report 2020* on July 2, 2019. The report is a flagship deliverable of the PEI's Global Knowledge Sharing work-plan and will provide the technical basis for the PEI's signature Global Learning Event in Spring 2020. The report will provide a global assessment of the coverage of economic inclusion programs that reach extreme poor and vulnerable people and help identify emerging lessons in how economic inclusion is framed as part of overall development dialogue. The report will focus on efforts to scale-up economic inclusion as part of government-led anti-poverty programs. The formal project concept review incorporated feedback from the IAC and involved the formal participation of IAC members.

Draft Concept Note for the Global Learning Event 2020

The PEI team consulted with Steering Committee and IAC members on the timing of a Global Learning Event in 2020 and decided to host the event on June 24 and 25, 2020, at the World Bank Headquarters in Washington, DC.



© Worldbank



ADVANCING THE PARTNERSHIP

New Program Manager On-Boarding

Over the reporting period, a key priority for the new team was to complete the on-boarding process for the PEI's new Program Manager, Colin Andrews. The recruitment process was competitive and solicited applications from within and outside of the WBG with over 400 applications received. Colin joined the PEI Management Team on April 15, 2019. Colin is a former Senior Economist in the Social Protection and Jobs Global Practice in the World Bank, with considerable operational and analytical experience. Prior to joining the World Bank, he worked at the Food and Agriculture Organization of the United Nations, the European Commission, and Concern Worldwide.

Inaugural Steering Committee Meeting

In May, the PEI's Steering Committee convened its inaugural meeting with the objective of approving the FY20 work-plan. The SC expressed strong support for the FY20 work-plan. The SC appreciated the overall principles of the work-plan with the focus on leveraging the partnership, consolidating activities, seeking synergies across pillars, and leading smarter communications. The SC concurred with the indicative budget presented and authorized the team to commit up to US\$3.8 million of the MDTF funds over the next 12 months. Within this total, the SC acknowledged the need for some budget flexibility, given the early stages of planning. Any significant budgetary changes will be communicated to the SC as part of the next bi-annual meeting. The SC reemphasized their commitment to supporting future resource mobilization efforts and proposed a full discussion of these issues at the next SC meeting.

Governance

Discussions continued around the operationalization of governance mechanisms within the PEI. All stakeholders acknowledged that further reflection and planning is required to ensure that the best implementation of governance arrangements is reflected in the forthcoming Partnership Guide anticipated in Fall 2019. **The formalization of the PEI partnership arrangements is a top priority for the FY20 work-plan.** A partnership memo has been drafted outlining a set of holistic considerations and to outline a process that allows adequate reflection on key issues.

Fundraising

The PEI Management Team agreed to develop a fundraising plan to inform the next Steering Committee meeting in December 2019. The PEI seeks to add two new donors to the MDTF during the forthcoming year. These plans will be elaborated in the first part of FY20, with a dedicated discussion at the December SC meeting.

D.

AGGREGATED RESULTS

While it is too early to report results, the PEI has established some of the activity infrastructure required to meet the intermediate outcomes outlined in the Results Framework (Annex 1, including an indication of how it relates to activities planned for FY20). Key preparatory efforts include:

- Launch of the Call for Proposals, with selection of the inaugural PEI Grants Awardees forthcoming.
- Establishment of the date and location for the Global Learning Event.
- Approval by the WBG of the State of Economic Inclusion Report concept note (with input from the IAC).
- Completion of communication materials (e.g., EI 101 resources) and knowledge management web infrastructure.



© Worldbank



© Bandhan

ANNEXES



A.

PEI RESULTS FRAMEWORK

Intermediate Outcomes	Indicators	Data Source(s)
Governments develop and incorporate evidence-based good practices on design and implementation into their economic inclusion programming.	<ul style="list-style-type: none"> # of governments that have put in place evidence-based policies supporting economic inclusion programming # of governments that have adapted existing systems to incorporate evidence-based economic inclusion programming # of governments piloting evidence-based economic inclusion programming # of governments implementing evidence-based economic inclusion programming at scale 	<ul style="list-style-type: none"> Global landscaping survey, WB portfolio and pipeline analysis and ASPIRE database (if relevant data are collected and available) Reporting from program-level M&E data Midterm stakeholder consultation (including independent verification and analysis of qualitative as well as quantitative indicators)

FY20 Activity Description

Pillar 1:

- Inaugural PEI Grants Awardees: Engagement with 8-10 CfP winners including in-country support/guidance***
- Strategic country engagement responding to on-demand requests from country clients for high-level advice (a focus on 5-10 countries)

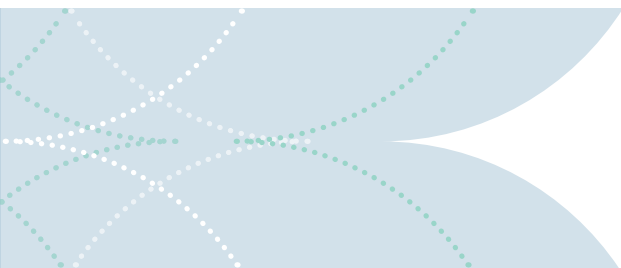
Pillar 2:

- Facilitation: Evidence-base agenda is informed by demand to innovate and learn about quality economic inclusion programming at scale. CfP countries expected to shape this agenda.

Pillar 3:

- Global Learning Event devised as a key framing event to bring together technical learning and country experiences—ultimately to inform good practice.***
- Series of show-and-tell webinars focused on showcasing current work and unfolding agenda linked to Country Engagement under Pillar 1.
- Curation and generation of knowledge materials devised to inform best practice on the ground.

* Activity engaged in during reporting period



Intermediate Outcomes	Indicators	Data Source(s)
Knowledge is established and communicated on how governments can adopt, adapt, and scale economic inclusion programming.	<ul style="list-style-type: none"> # of research studies/ evaluations completed or underway by the PEI that fill identified knowledge gaps in the field # of governments adopting, adapting, or scaling economic inclusion programs using best practices and standards # of innovation workshops conducted with relevant government stakeholders # of peer-to-peer knowledge sharing activities (other than innovation workshops) conducted with the inclusion of members from relevant parties such as government, the World Bank and other development partners and CoP members 	<ul style="list-style-type: none"> Global landscaping survey Tracking of policy advice, technical assistance and peer exchange to governments, from M&E Tracking of research completed and underway Analysis of findings from proof points, case studies, evidence, and CoP insights (through stakeholder surveys) WB portfolio & pipeline analysis

FY20 Activity Description

Pillar 1:

- Learning is extracted from country engagement, to inform Pillar 3 work via show-and-tell webinars, country briefs, and capture of country reports and outputs. This will also emphasize the importance of peer-to-peer knowledge exchange.

Pillar 2:

- Identification of a work-plan and prioritization of research topics to fill gaps in the field.

Pillar 3:

- Communications: Basic 101 resources***
- Community knowledge curation and dissemination services (tacit knowledge/flow)***
- Signature knowledge generation and products (stock)
- Delivery of Landscaping Report as a key framing document to inform the technical agenda going forward.

* Activity engaged in during reporting period

Intermediate Outcomes	Indicators	Data Source(s)
Increased expertise is available and supporting economic inclusion programs.	<ul style="list-style-type: none"> # of active PEI members (track # per constituency) # of CoP participants 	<ul style="list-style-type: none"> Tracking of PEI members; including qualitative evidence of their expertise, their engagements, and participation in training programs (as provider and/or recipient) and mid-term stakeholder consultation

FY20 Activity Description

Pillar 1:

- Connections established in support of the country engagement, which features as a preference for the CfP in particular

Pillar 2:

- Research networks are leveraged to set in place an agenda for going forward.

Pillar 3:

- Key activities will be developed with active input from PEI members, which is an expectation set out in membership. The curation and dissemination of real-time resources will be especially important in this regard as PEI sets out to connect practitioners with best available information and expertise.

* Activity engaged in during reporting period

Intermediate Outcomes	Indicators	Data Source(s)
Increased funding is available for economic inclusion programming.	<ul style="list-style-type: none"> Increase in level of government funding provided for economic inclusion programming Increase in # of funders supporting, and level of funding for, economic inclusion programming 	<ul style="list-style-type: none"> Tracking Global landscaping survey WB portfolio and pipeline analysis

FY20 Activity Description

Pillar 1:

- Inaugural PEI Grants Awardees (see above) and Strategic Country Engagement (see above)***

Pillar 2:

- Potential for specific resource mobilization on evaluative agenda going forward.

Pillar 3:

- Member and development partner outreach: In particular using the Global Learning Event as a key springboard to introduce additional funders to the MDTF.

* Activity engaged in during reporting period

Intermediate Outcomes	Indicators	Data Source(s)
PEI has engaged and leveraged its location within the World Bank.	<ul style="list-style-type: none"> • Level of World Bank funding for economic inclusion programming • # of World Bank-supported programs incorporating EI component that is informed by PEI CoP, # of people targeted by these programs • # of references to economic inclusion programming in World Bank leadership statements 	<ul style="list-style-type: none"> • WB portfolio and pipeline analysis • Global landscaping survey

FY20 Activity Description

Note: A series of work under the strategic partnership and management priorities will be undertaken to fully take advantage of the Bank's hosting of the PEI. Some of the primary pathways to maximize this relationship include:

Pillar 1:

- Operationalizing the PEI agenda within Bank operations via the CfP and engaging in strategic country support.

Pillar 2:

- Connecting Bank expertise with wider network of researchers on EI and ensuring the research engagement is relevant for Pillar 1 country engagement support.

Pillar 3:

- Framing engagement on overall learning, within the wider context of WB global and country engagement.

* Activity engaged in during reporting period





THE WORLD BANK
IBRD • IDA | WORLD BANK GROUP