



May 2021

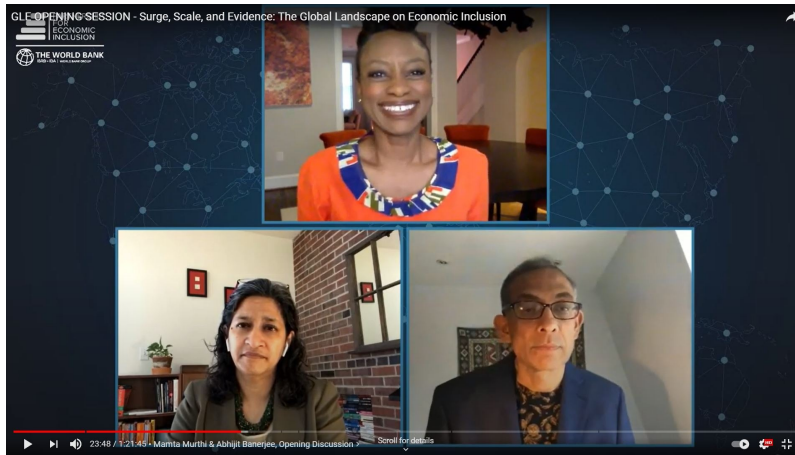


RESOURCES FROM PEI TEAM



Session highlighted from PEI Global Learning Event 2021: **Surge, Scale, and Evidence: Economic Inclusion for the Poorest**

In this fast-paced and conversational session from Global Learning Event 2021: *Economic Inclusion for the Poorest - Moving to Scale*, a high level gathering of experts, including Mamta Murthi, VP for Human Development at WBG, and Abhijit Banerjee, Nobel Laureate and Economist, explores the potential and pitfalls of scaling economic inclusion through government policies, institutions, and programs. [Watch here.](#)



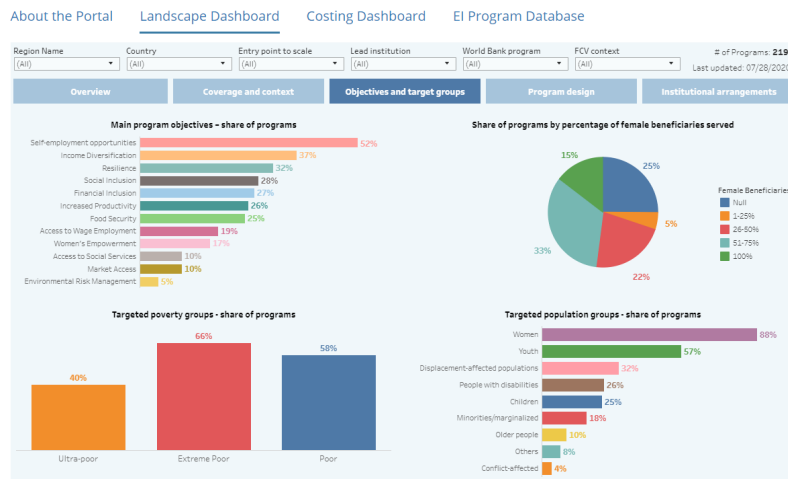
All Sessions Recordings Now Online!

[Visit YouTube](#) to access all sessions recordings from the recent Global Learning Event 2021: *Economic Inclusion for the Poorest – Moving to Scale*. The event, hosted by the Partnership for Economic Inclusion, explored new evidence and learning on moving national economic inclusion programs to scale. Over 40 country delegations and 50 organizations convened for three days to take stock of new trends, key debates and innovations. Explore +20hrs of thematic conversations and experiences on moving national economic inclusion programs for the poorest and most vulnerable to scale. [See videos](#)

You may also access all session materials including session summaries, PowerPoint presentations, and other resources [collected here](#).

An overarching goal of the event was to build on the evidence and learning of the State of Economic Inclusion Report 2021, with a view to advancing the operationalization of economic inclusion across national policy, strategy, and programming. [Download SEI2021 report](#)

PEI Data Portal



Updating PEI Landscape Survey

We are now doing a fresh round of data collection through the Landscape Survey of Economic Inclusion programs to update [PEI's Data Portal](#). The unique feature of PEI's Data Portal is its snapshot of the key design and implementation aspects of economic inclusion programs globally. Task teams, policy makers and practitioners can use the data portal to gain insights into what other economic inclusion programs are doing in different settings and for different target groups.

We will be capturing data from active programs till the end of July and would welcome your support. Please use [this survey](#) to share or update your program data.

NEWS AND RESOURCES FROM PEI PARTNERS



Emerging evidence and lessons on the Ultra-Poor Graduation Approach (part four)

The fourth and final post in this series of articles builds on its three precedent articles (the basics on Graduation Approach and context adaptation, key preliminary findings, and lessons learnt) and jumps in to elaborate on the activities employed to mitigate the shock of Covid19 based on field-based program staff in Bangladesh, Ethiopia and Uganda. This article reflects the adaptation strategies in the face of Covid19 by assessing the context and the way graduation to resilience was implemented. [Read more](#).

If you missed previous parts of this series, please read [part 1](#), [part 2](#), [part 3](#).



Increasing economic vulnerabilities due to climate change

In the report 'Understanding impact of climate change on poor and vulnerable Char people' supported by Concern Worldwide and Trickle Up among others showcase the urgency of addressing climate change in vulnerable countries like Bangladesh. Targeting locals of Char area, this report reveals specific climate-induced impacts affecting poor and vulnerable people and makes recommendations on how future programming could manage these risks. [Read more](#)

In another article, Trickle Up talks about expanding its programs and partnerships to respond to increasing vulnerabilities due to climate change by helping vulnerable households and communities build resilience—by identifying risks, adapting livelihoods, planning for emergencies, and working together. [Read more](#)



Technology and economic inclusion

The article 'Poverty Alleviation and Women's Empowerment When Women use Tech' reflects on Village Enterprise's Digital Transformation over time as well as the potential and current innovations that technology can provide to Women Business Mentors, Women entrepreneurs, and the improvement of program delivery or the disbursement of business grants in a context marked by social distancing. [Read more](#)

In article 'Con Héctor: the virtual assistant driving Latin America's economic recovery', read how Fundación Capital is pursuing the digital inclusion of the poorest by positioning technology as an entry point to the digital economy. [Read more](#)

Paraguay: Women in vulnerable situations and their resilience against COVID-19 challenges



Based on a post-COVID quarantine analysis, Fundación Capital carried out a Graduation Project in Paraguay, supported by the International Development Research Centre (IDRC). The project is based on research to understand the effects of COVID-19, how women have found ways to withstand the pandemic, and how the program is seeking to strengthen their resilience. You can also read the full report found at the end of the article. [Read more](#)



Long-term transformational change for refugees

Village Enterprise, together with Mercy Corps and IDinsight, are working on a new project combining VE's graduation strategy and MC's great market systems work: Delivering Resilient Enterprises and Market Systems - or DREAMS for Refugees. The project will layer two evidence-based models to achieve increased household income, savings, and assets; improved food security; and improved well-being for 150,000 women, children, and men. [Read more](#)

Relatedly, immense effort in designing programs on refugees is underway, led by organizations dedicated to improving the lives of refugees around the world. [Read more](#)



Why we need a multisectoral approach to end extreme poverty

The complex nature of poverty calls for urgent and multidimensional responses. In this article BRAC develops an argument on how social protections systems have been fundamental when decreasing the numbers of poor people from 1.1 billion to 691 billions from 2011 to 2019 adopting multisectoral efforts that integrate solid coordination between governments, multilaterals, civil society, private sector and academia. [Read more](#)

OTHER RESOURCES



The Graduation program effects on armed-conflict victims in Colombia

As part of the Colombian government's strategy to support the armed-conflict victims, a Graduation Program called "Transformando Mi Futuro" (Transforming my future) was implemented. This program targets urban population and does not include assets transfers. The impact evaluation results suggest that the program contributed to improving the living conditions of participating households. However, heterogeneity analysis shows that impacts are differentiated according initial status of participants. [Read more](#)

About PEI



The [Partnership for Economic Inclusion](#) is a global network that includes national governments, policymakers, development partners, and nongovernmental and research organizations. PEI is hosted by the World Bank's Social Protection and Jobs Global Practice and seeks to formalize partnerships now that will solidify an economic inclusion

network that is global and far-reaching. PEI partners help develop economic inclusion programs and contribute to evidence-based good practices that can be adapted to local conditions by governments and local or international agencies. Through their work, each partner is helping build a platform that will refine and enable the sharing of cutting-edge knowledge about what works in economic inclusion.



Implemented by



Subscribe to our newsletter [here](#)

Partnership for Economic Inclusion c/o World Bank Group 1818 H Street, N.W.
MSN G8-800 . Washington, DC 20433

Privacy Policy

The content in this E-bulletin is copyrighted. Requests to reproduce it, in whole or in part, should be addressed to peimt@worldbank.org. For more information visit our website:<http://www.peiglobal.org>