



NEWS FROM PEI

How does economic inclusion boost job productivity for people living in poverty?



Job opportunities are enhanced by facilitating people's transition from subsistence farming, fostering job creation, providing technical and business skills to improve occupational choices, and linking household enterprises to markets.

Dianne Calvi, President and CEO of Village Enterprise, and Gregory Chen, Managing Director of BRAC International's Ultra-Poor Graduation Initiative, engaged in a lively

discussion moderated by Iffath Sharif, Global Director of the World Bank's Social Protection and Jobs Practice, in a Knowledge Cafe as part of the World Bank's Spring Meetings. They discussed how economic inclusion programs can support the creation of jobs, raise incomes, and build resilience for people living in extreme poverty. Our panelists also highlighted the importance of collaboration between governments and NGOs to pave the way for impactful and scalable economic inclusion programs.

[Watch the discussion >](#)

Open House: implementing economic inclusion programs for displaced and host communities in Uganda and Niger



PEI and the World Bank's Development Impact Evaluation (DIME) Group co-hosted an Open House event on May 2nd to explore two economic inclusion programs working with refugees and host communities in Uganda and Niger.

Colleagues from USAID, UNHCR, AVSI and DIME shared lessons on the central role of context in the design and implementation of programs that integrate host and displaced communities. They highlighted the importance of improving mobility of displaced people to allow market engagement, the importance of actively engaging people in program design, and adapting programs based on robust data collection and monitoring.

[Watch recording >](#)

[Access resources >](#)

Last call! Add your voice to PEI's 2024 Engagement Survey by May 31



PEI wants to hear from you! The partnership is conducting a survey to understand how well we are serving our partners and other organizations involved in economic inclusion programming around the globe. **The deadline to complete the survey is Friday, May 31st.** Your survey response will help us understand the relevance of our work and help inform future plans.

Click [here](#) to access the survey >

NEWS AND RESOURCES FROM PEI PARTNERS

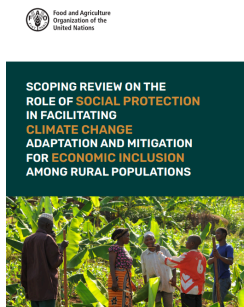


Photo credit: Village Enterprise

Women refugees who became successful entrepreneurs in Uganda featured on the BBC Business Daily podcast

Dawa, Salome, and Stella are three refugees who have launched businesses with support from Village Enterprise's economic inclusion program. Learn how, when equipped with cash, business training, and mentoring, they are lifting themselves out of poverty. Village Enterprise CEO Dianne Calvi and PEI Program Manager Victoria Strokova joined the conversation to discuss the potential for economic inclusion programs to help governments cost-effectively increase the incomes and assets of the poorest and most vulnerable people.

[Listen to the podcast >](#)



How can social protection facilitate climate change adaptation and mitigation for economic inclusion among rural populations?

People in rural areas are disproportionately impacted by climate change because their livelihoods depend largely on natural resources and weather patterns. In this publication, FAO presents evidence on how social protection programs contribute to climate mitigation targets by reducing greenhouse gas emissions and easing the impact of mitigation on price inflation, job losses, and income insecurity. The report also underscores the importance of taking a systems approach.

[Keep reading >](#)



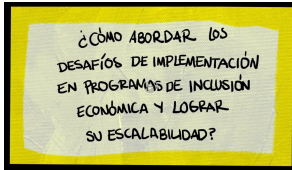
Photo credit: BRAC International

Extreme heat crisis: The multifaceted impacts of heat stress on the livelihoods of the most vulnerable people

Extreme heat disproportionately affects vulnerable populations, including women in poverty, older people, children and youth, and outdoor workers like farmers. According to the ILO, 80 million people are predicted to lose their jobs because of heat stress worldwide by 2030. On May 7, BRAC convened poverty and climate experts to discuss the impacts of heat stress on vulnerable groups and share potential solutions, including the need to fund locally led solutions in countries most affected by climate change.

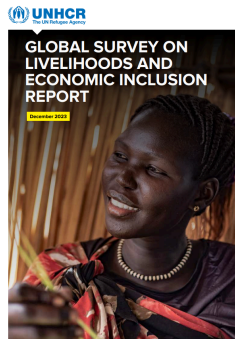
[Keep reading >](#)

Video: Overcoming challenges in the implementation of economic inclusion programs at scale



This Spanish-language, animated video from Fundación Capital shares key lessons from the In Practice publication “Designing and Delivering Government-Led Graduation Programs for People in Extreme Poverty.” The PEI publication, jointly published by BOMA, BRAC, Village Enterprise, and Fundación Capital, provides insights from these four innovative NGOs on the potential to scale up government-led graduation programs for people living in extreme poverty.

[Watch the video and change subtitles to other languages >](#)



In case you missed it: Third Global Survey on Livelihoods and Economic Inclusion

UNHCR's third Global Survey on Livelihoods and Economic Inclusion includes data from 132 countries where UNHCR operates and covers 99.6% of the global refugee population. The survey highlights positive and promising developments since 2021 in expanding refugees' access to economic, social, and agricultural land rights. It also sheds light on refugee employment and the specific barriers that women and older adolescents face in accessing formal employment.

[Keep reading >](#)

The “Amazons” partner with CARE and the government of Côte d'Ivoire to expand VSLAs nationally



Photo credit: CARE

The “Amazons,” a Village Savings and Loan Association (VSLA) of women in Côte d'Ivoire, are establishing and expanding VSLAs to empower women and marginalized communities across the country. The VSLA groups provide a safe place for people in poverty who lack access to financial services to save, access loans, and share advice. With support and training from CARE and the Ministry of National Cohesion, Solidarity and Poverty Eradication, 49 members of the Amazons have already created nearly 2,000 VSLA groups with over 45,000 members nationally and plan to create another 2,000 more associations by 2026.

[Keep reading >](#)

Get the latest articles, research, ideas, and events from PEI, our partners, and colleagues

[Join us on Twitter/X](#)
and catch up with our [PEI Open House Events series here.](#)



The [Partnership for Economic Inclusion](#) is a global network that includes national governments, policymakers, development partners, and nongovernmental and research organizations. PEI is hosted by the World Bank's Social Protection and Jobs Global Practice and seeks to formalize partnerships now that will solidify an economic inclusion network that is global and far-reaching. PEI partners help develop economic inclusion programs and contribute to evidence-based good practices that can be adapted to local conditions by governments and local or international agencies. Through their work, each partner is helping build a platform that will refine and enable the sharing of cutting-edge knowledge about what works in economic inclusion.



[Subscribe to our newsletter here](#)

Partnership for Economic Inclusion c/o World Bank Group 1818 H Street, N.W.
MSN G8-800 . Washington, DC 20433

[Unsubscribe from this list](#)

Privacy Policy

The content in this E-bulletin is copyrighted. Requests to reproduce it, in whole or in part, should be addressed to peimt@worldbank.org. For more information visit our website: <https://www.peiglobal.org>