

Nov **November 2021**

Photo: © A'Melody Lee / World Bank

NEWS AND RESOURCES FROM PEI

PEI Annual Report 2021 is out now!



[Get the annual report here](#)

Year 2021 was a pivotal year for the Partnership for Economic Inclusion (PEI), establishing PEI's efforts to support the scale up of government-led economic inclusion, in partnership with diverse stakeholders, funding partners and World Bank Group (WBG) operations. As governments and development partners seek solutions to strengthen resilience and recovery, economic inclusion programs are on the rise. The 2020 Annual Report summarizes PEI's progress toward the adaptation of scaled government-led economic inclusion programs, the promotion of evidence-based learning across government and partner organizations, and the strengthening of partnerships and alliances across PEI to support the ongoing expansion of economic inclusion programming. Results have been strong.

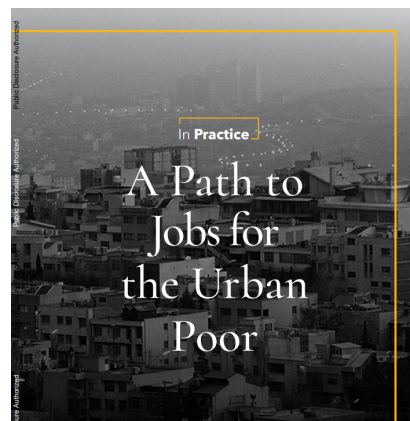
Introducing the In Practice series

We are excited to announce our first publication: *A Path to Jobs for the Urban Poor Note*

The In Practice series features accessible, practitioner-focused publications that highlight learning, good practice, and emerging innovations for scaling up economic inclusion programs. In making the case for economic inclusion programs in urban areas, *A Path to Jobs for the Urban Poor* highlights the role these programs have in promoting the

social and economic inclusion of the urban poor and vulnerable groups, lays out a framework for such programming, and points to the growing learning agenda for economic inclusion programming in urban contexts, including the emerging evidence on the impacts and costs of urban programs.

Download it now!



By Jorge Avalos, Sarang Chaudhury, Timothy Clay, and Puja Vasudeva Dutta



Watch our two PEI Open House events...



Watch #FoodSystems

Watch #UrbanContexts

In September and October PEI hosted the two first events of PEI Open House where leading experts and organizations explored fresh perspectives on economic inclusion programming, country-level innovations, and important intersections in building inclusive economic opportunities. [The first event](#), co-hosted with FAO contributed to improve the understanding between economic inclusion programs and agri-food systems to help countries achieve the 2030 agenda.

[Our second event](#), moderated by PEI AC member and former poverty alleviation minister of Pakistan, Marvi Memon, sought to frame economic inclusion programs in urban contexts. It took place in collaboration between the World Bank (PEI in the Social Protection and Jobs (SPJ) and Global Practice and Urban, Disaster Risk Management, Resilience and Land (URL) Global Practice) and BRAC, a funding and technical partner of PEI. You can watch them both now on YouTube!

...and register now to attend the 3rd PEI Open House! On cost analysis and cost optimization for EI programs



PEI Open House

Economic Inclusion at What Cost?

Join the conversation
December 13
9:30 am - 11 am ET






The objective of this webinar, "Economic Inclusion at What Cost?", in collaboration with Concern Worldwide, is to bring different perspectives on the importance of disaggregating program costs of multifaceted economic inclusion programs. Open to the public, the webinar will gather global and country experts to discuss the role of cost analysis to inform not just cost-effectiveness but also program design decisions. Additionally, the event will highlight that having reliable costing data offers considerable scope to further understand cost optimization of these complex interventions. PEI Team will also introduce its refined costing tool during the event with an open call to all program teams to submit their costing data. [Register here!](#)

NEWS AND RESOURCES FROM PEI PARTNERS



COVID-19 vs the ultra-poor graduation approach: Evidence from Bangladesh

The IGC holds a range of events from in-country research dissemination discussions and capacity building workshops, to research and policy conferences with a global reach. In this IGC webinar 'COVID-19 vs the ultra-poor graduation approach: Evidence from Bangladesh' various experts bring to light the latest findings by BRAC Institute of Governance and Development and LSE on the impact of the COVID-19 pandemic on the 2007 cohort of beneficiaries of BRAC's UPG program in rural areas of Bangladesh and includes a live audience Q&A with Oriana Bandiera and the panel. [Watch it here.](#)

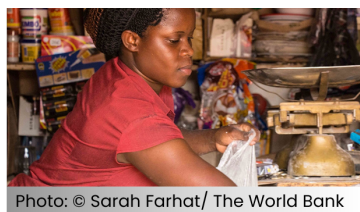


Photo: © Sarah Farhat/ The World Bank

Unlocking the potential of women entrepreneurs in Uganda

What will it take to help women entrepreneurs reach their full potential in Uganda, where women own one in three of all businesses yet tend to run businesses that are smaller and operate in less profitable sectors than those of men? Explore the answer to this question and others in this blog, that synthesizes key results and messages from a growing impact evaluation literature showing what has already worked in helping empower women across Sub-Saharan Africa, which among others, include comprehensive economic inclusion packages. [Read more here.](#)



Photo: © Maciej via Flickr, CC BY-SA 2.0, via iied

Improving community attitudes towards conservatism: A case of wildlife-friendly enterprises

Village Enterprise, alongside the International Institute for Environment and Development (IIED), The Uganda Wildlife Authority, the Wildlife Conservation Society, the Uganda Conservation Foundation, and funded by the UK Department for Environment, Food, and Rural Affairs (DEFRA), implemented the Park Actions project. The project looked to mitigate human-wildlife conflict and eliminate illegal wildlife trade around Murchison Falls National Park in Uganda through the completion of a sustainable alternative livelihood program. Village Enterprise established 180 wildlife-friendly businesses to generate alternative sources of income. Overall, the results show strong local community support for the project activities and improved attitudes towards wildlife and conservation activities. These results were recently published by IIED as a case study, research report, and blog. The links to those resources can be found here: [Research Report](#), [Case Study](#), and [Blog](#).



Photo: © BRAC

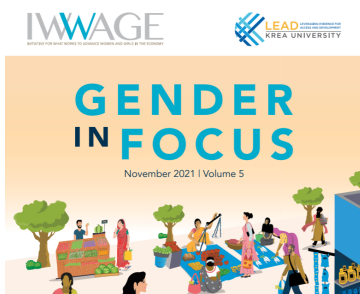
Universal Gender Issues, Contextualized Solutions: How to Design Programs that Challenge Existing Gender Norms and Address Universal Injustices of Extreme Poverty

Traditional gender norms are an especially significant factor that drives and perpetuates extreme poverty. BRAC's Ultra-Poor Graduation Initiative (UPGI) designs and implements its Graduation approach to challenge harmful gender norms in each community it serves, better positioning program participants for an upward trajectory out of extreme poverty that is profound and long-lasting. Read how they work around this issue and the various successful stories from women beneficiaries [here](#).



Village Enterprise's Voices of Tumaini Virtual Event

Village Enterprise hosted its second annual Voices of Tumaini virtual event. The webinar focused on why fostering gender equity through economic inclusion is essential to Village Enterprise's efforts to end extreme poverty for 20 million people across Africa by 2030. The event featured a panel comprised of representatives from Days for Girls International, Lwala Community Alliance, and The Starbucks Foundation who spoke about partnerships with Village Enterprise that address the intersection of women's empowerment, financial inclusion, nutrition, and menstrual health management. [Watch the full recording here](#).



IWWAGE Magazine: Gender in Focus, Volume 5

The Initiative for What Works to Advance Women and Girls in the Economy (IWWAGE) has launched their fifth edition of their quarterly newsletter to provide a bird's eye view of the gender landscape in India, and how it is evolving. The report showcases the work being undertaken by them and their partners around key issues emerging as challenges for women's economic empowerment in India. The magazine will bring to you informative articles, stories, briefs, and updates. [Access the document here](#).

Cash transfers and women's economic inclusion - Experimental evidence from Zambia



Cash transfers and women's economic inclusion

This paper investigates whether an increase in exogenous income through the Child Grants model of the Social Cash Transfer programme in Zambia fosters economic inclusion among rural women. The authors conceptualize economic inclusion as a transformative process comprised of four pillars: productive capacity, financial inclusion, social power, and psychological assets. Using experimental data, they find strong evidence of direct impacts of the Child Grant on the productive capacity, financial inclusion, and psychological assets of rural women. [See here.](#)



Photo: © BRAC

OPINION: Global leaders are funding a historic COVID response for the world's poorest countries, but will it reach those who need it most?

Check out the latest op-ed by BRAC, Trickle Up and Results about the need for IDA20 to include people who are furthest behind in the lowest quintiles. They believe that the IDA 20 package should go beyond IDA 2019 funding package set for 30-40 million people reached by safety nets in all quintiles of poverty, aiming to reach at least 44-54 million people (accounting for demographic growth and excluding COVID-19 temporary coverage), for all quintiles, with the majority of these being people in extreme poverty. The note was an initiative of the Leadership Collaborative on Ending Ultra-Poverty, supported by PEI. [Read more here.](#)

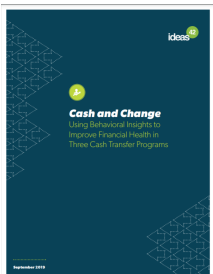
SPECIAL SECTION: The role of behavioral nudges in EI programming

	01	02	03	04	05
	Exposure Ratio	Reach	High Income Population	High Income Population	Exposure Ratio
Panel A: Exposure to CBT	0.08 (0.05)	0.05 (0.03)	0.07 (0.02)	0.07 (0.01)	0.05 (0.04)
Observation	7,401	7,079	7,448	7,448	7,441
Standard Error	0.00	0.00	0.01	0.01	0.00
Panel B: Exposure to Peer Contact	0.00	0.00	0.00	0.00	0.00
Observation	7,401	7,079	7,448	7,448	7,441
Standard Error	0.00	0.00	0.00	0.00	0.00
Panel C: Exposure to Incentive Contact	0.00	0.00	0.00	0.00	0.00
Observation	7,401	7,079	7,448	7,448	7,441
Standard Error	0.00	0.00	0.00	0.00	0.00

Photo: © N. Barker et al.

Mental Health Therapy as a Core Strategy for Increasing Human Capital: Evidence from Ghana

Explore this interesting paper published by the National Bureau of Economic Research studying the impact of cognitive behavioral therapy (CBT) for individuals selected from the general population of poor households in rural Ghana. Results from 2-3 months after a randomized intervention show strong impacts on mental and physical health, cognitive and socioemotional skills, and downstream economic outcomes. [Download it here.](#)

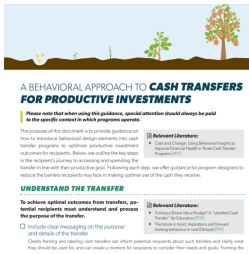


Cash and Change: Using Behavioral Insights to Improve Financial Health in Three Cash Transfer Programs

What happened in Kenya, Tanzania and Madagascar when Ideas43 and the World Bank tested behavioral nudges to help cash transfer recipients make productive investments? Small-scale pilot tests are showing positive results. [Read more here](#)

A behavioral approach to cash transfers for productive investments?

This paper by Ideas42 and the World Bank provides guidance on how to introduce behavioral design elements into cash transfers programs to optimize productive investments outcomes for recipients following a 5-step guide that you can [download here.](#)



About PEI

Get daily updates on the latest in economic inclusion!

[JOIN US on Twitter to get the latest articles, research, ideas, and events by PEI, our partners, and colleagues!](#)



The [Partnership for Economic Inclusion](#) is a global network that includes national governments, policymakers, development partners, and nongovernmental and research organizations. PEI is hosted by the World Bank's Social Protection and Jobs Global Practice and seeks to formalize partnerships now that will solidify an economic inclusion network that is global and far-reaching. PEI partners help develop economic inclusion programs and contribute to evidence-based good practices that can be adapted to local conditions by governments and local or international agencies. Through their work, each partner is helping build a platform that will refine and enable the sharing of cutting-edge knowledge about what works in economic inclusion.



Subscribe to our newsletter [here](#)

Partnership for Economic Inclusion c/o World Bank Group 1818 H Street, N.W.
MSN G8-800 . Washington, DC 20433

[Unsubscribe from this list](#)

Privacy Policy

The content in this E-bulletin is copyrighted. Requests to reproduce it, in whole or in part, should be addressed to peimt@worldbank.org. For more information visit our website:<http://www.peiglobal.org>