



July 2021



Photo: © Chor Sokunthea / World Bank

NEWS AND RESOURCES FROM PEI

A new approach to assessing the costs of economic inclusion programs

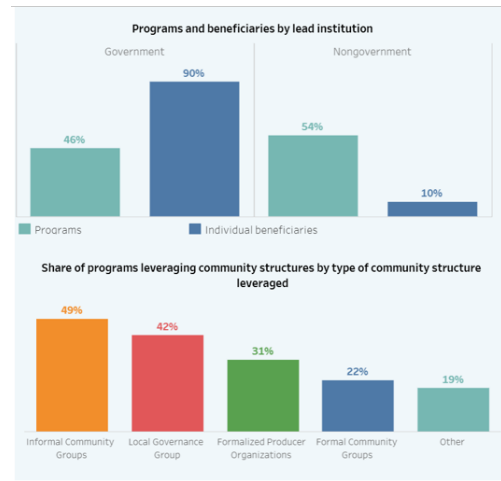


Photo: © Photo: Sarah Farhat/World Bank

PEI's cost analysis tools can be used to optimize program costs as economic inclusion programs move to scale. Research findings confirm the value of cost data beyond their use in cost-effectiveness studies. It is noteworthy that the analysis is based on a small subset of 219 economic inclusion programs being implemented globally and reflected in the [State of Economic Inclusion 2021](#) report. Increasing the number of programs that are reporting cost information would allow better and more robust analysis, particularly by program type, region, and target group. [Read more here](#)

PEI's Data Portal: Updating landscape survey!

To achieve economic inclusion at scale, several programmatic and institutional mechanics needed to embed programs in government systems must be considered. Along with design and implementation features, [PEI Data Portal](#) provides a snapshot of institutional arrangements in which EI programs operate. To keep data up to date, PEI is conducting a fresh round of data collection through the Landscape Survey of Economic Inclusion programs to update PEI's Data Portal. Task teams, policy makers and practitioners can use the data portal to gain insights into what other economic inclusion programs are doing in different settings and for different target groups. Please [use this survey](#) to share or update your program data.



PEI Grant Awards: COVID-19 Recovery



ANGOLA

Design of Economic Inclusion Interventions



BENIN

Increasing Vulnerable Youth Economic Inclusion by Strengthening Employment Services & Introducing Gender Responsive Innovations



CAMEROON

Innovations for the Economic Inclusion of Urban Youth in the Wake of COVID-19



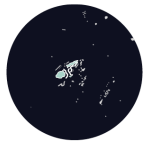
DJIBOUTI

Productive Inclusion Program



DRC

Adapting Productive Inclusion for Refugees



FIJI

Supporting COVID-19 Recovery by Scaling Up Gender Sensitive Economic Inclusion Activities to Urban Areas



GHANA

Facilitating the Expansion of Productive Inclusion Activities to Urban Areas



INDONESIA

Urban Regeneration & Economic Inclusion



MADAGASCAR

Economic Inclusion Pilot in Urban Areas



UGANDA

Assessing Economic Inclusion Interventions in Northern Uganda

We are delighted to announce the successful country grant awardees as part of the COVID-19 Recovery Call for Proposals under the Partnership for Economic Inclusion. The 10 successful teams comprise a diverse portfolio of countries that are seeking to provide appropriate and scalable economic inclusion responses to the pandemic for the poorest. The grant awards cover several regions and engagements across multiple global practices building on social protection and “cash plus” investments in each country. PEI received many compelling applications to this Call for Proposals round, which made the final decision-making process challenging.

NEWS AND RESOURCES FROM PEI PARTNERS

Government: your biggest ally on your journey to scale?

The BOMA Project and Spring Impact recently hosted a webinar on government adoption and paths to scale. It focused on insights for fostering strong partnerships with government, a case study with the county government of Marsabit, Kenya and BOMA. The full video can be [found here](#).



Photo: ©The BOMA Project & Spring Impact



Photo: © Village Enterprise

Turning up the heat – how chilli growing is conserving Uganda's wildlife

Juliet Aneno from Village Enterprise explains how chilli-growing enterprises in Uganda are helping households generate non-poaching related income – supporting efforts to mitigate human-wildlife conflict around Murchison Falls National Park. [Read more here.](#)



Photo: © UNHCR/Esther Ruth Mbabazi

UNHCR 2021 Regional NGO consultations

The UNHCR Bureau for East, Horn of Africa and the Great Lakes (EHAGL), in collaboration with the International Council of Voluntary Agencies (ICVA), organized the [2021 Regional NGO Consultations](#). The themes included: Localization of Humanitarian Action and Engagement with Communities in the COVID-19 Context; Implementation of the Global Refugee Forum Pledges; Socio-Economic Inclusion of Refugees and Climate Action. PEI Program Manager, Colin Andrews, presented at the [side event](#) co-organized with the Poverty Alleviation Coalition on the Socio-Economic Inclusion of Refugees” on Tuesday 29th June.



Photo: © BRAC

Why we need to understand extreme poverty as multidimensional

Multidimensional poverty is a holistic way of viewing the various deprivations people in poverty face. While international actors use different definitions of what constitutes multidimensional poverty, it generally involves a lack of food, clean water, education, healthcare, or a steady income along with social marginalization and the absence of hope for the future. Read the full article by BRAC [here.](#)

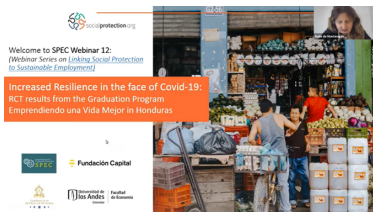


Photo: © socialprotection.org YouTube

Increased resilience in the face of COVID-19: Randomized Controlled Trials (RCT) results from the graduation program in Honduras

Don't miss how graduation programs can build resilience and support the economic recovery of vulnerable families in the face of major shocks. Listen to the [recording of the webinar](#) organized by socialprotection.org - where Fundación Capital presented the results of an RCT, supported by the International Development Research Centre (IDRC), about their program implemented in Honduras through a partnership with the Government of Honduras and the Inter-American Development Bank (IDB).

Natural protectors: Kenyan women step up to save a forest

Only a few years ago, Samburu women in northern Kenya were cutting down firewood in Kirisia forest and burning it to make charcoal. Now, those same women are directly involved in managing the forest, using it sustainably and reporting any illegal activity to



Photo: © David Duchemin / Yale Environment 360

authorities. Read about BOMA's work to train participants in Kenya on climate change and natural resource management, funded by the Climate Justice Resilience Fund and Whole Planet. [Read more.](#)

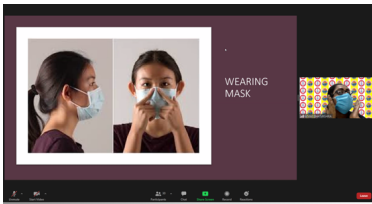


Photo: © David Duchemin / Yale Environment 360

Meet the Doctor Initiative: connecting doctors to local coaches in India

In June 2021, Trickle Up launched the “Meet the Doctor” initiative, directly connecting the local coaches in rural areas of India with doctors to provide clear messages on prevention, vaccination, issues, and myths regarding COVID-19. This case offers an innovative way of providing services in remote rural locations, an innovation that will be expanded to other regions in India and could have application to other economic inclusion programs in COVID-affected areas.. [Read more](#) .

HIGHLIGHT - WOMEN'S ECONOMIC EMPOWERMENT (WEE)

The [PEI State for Economic Inclusion Report](#) revealed that 90% of surveyed economic inclusion programs report a gender focus. Among others, Women's Economic Empowerment is a key theme for the partnership and global economic inclusion agenda. Enjoy this special section on women economic empowerment with a mix of resources from PEI's global partners.



Photo: © Stephan Gladieu / World Bank

Measuring women's economic empowerment

A surge of interest from governments, the private sector, researchers, and advocates in promoting women's economic empowerment has led to a proliferation of measurement tools. The multitude of tools currently available make it difficult to know which are most useful for specific purposes and contexts. This webinar discusses the compendium which selects and reviews tools for measuring WEE (or disempowerment) grouped into population monitoring tools and M&E tools. Watch the webinar [here](#), and view the compendium of selected tools [here](#).



Photo: © Paula Bronstein/Getty images/Images of Empowerment

Co-Impact's gender fund announcement

We are excited to share the [announcement](#) of Co-Impact's development of their second fund (the Gender Fund) – to accelerate progress towards gender equality and women's leadership, which will be launched at the end of the year. You can read the evidence reviews Co-Impact commissioned to inform their design and development of the Fund [here](#) and a comprehensive blog entry [here](#). The [Economic Opportunities](#) paper highlights the persuasive evidence that multi-component initiatives which seek to empower women and girls are more effective than singular ones across a range of outcomes.

A systematic review on women's economic empowerment: What do we know about interventions to increase women's economic participation and empowerment in South Asia?



Photo: © Peter Kapuscinski / World Bank

[This brief](#) presents early findings from a meta-analysis of interventions with effects on measures of WEE. The review offers insights and impact findings from skill-building interventions targeted to women in South Asia and highlights a significant lack of rigorously evaluated interventions and policies targeting women's skill-building in the region. Findings suggest that programs with tailored design and implementation to address women specific barriers had higher impacts. [Watch the webinar here.](#)



Photo: © World Bank

An all-women cooperative in Malawi sprouts up through the Agriculture Commercialization Project

[Read this story](#) showcasing how women's economic empowerment has been achieved through market-linked producer organizations. The Nsanama Women Cooperative, run and managed solely by women farmers, has received a matching grant from the Agriculture Commercialization Project (AGCOM), a \$95 million project financed by World Bank to promote commercial farming.



Photo: © Fundación Capital

IgualdApp: An app to transform social norms for equality

Can an app contribute to the change of social norms to achieve gender transformations in society? Read the article where we share the development and impressions of IgualdApp, an app that promotes the change of social norms in families and society. [Read more here.](#)

EVENTS, WORKSHOPS & PODCASTS



Photo: © Village Enterprise for Microsoft Alumni Network

Podcast with Dianne Calvi - Making change at scale means cross-sector work and changing policy

The President and CEO of Village Enterprise talks about how she is scaling Village Enterprise and why she's rooted in empathy. The podcast also dives into how tech, data, and partnerships are crucial in the fight to alleviate poverty and to achieving the goal to lift over 20 million people out of poverty by 2030.

[Listen to podcast here.](#)



Photo: © World Vision International

E-Workshop for development practitioners on Saving Group Practices

The workshop Savings For Transformation (S4T), is now available for registration online. Join a professional team of facilitators as they take you through some of the best savings group practices and methodologies to ensure the greatest impact for the communities. You can [register your interest](#) today as the next course starts in early August.

About PEI

Join us on Twitter!

Are you part of our Twitter Community already? [Follow us](#) to stay tuned to the latest articles, research and ideas from us and colleagues!



The [Partnership for Economic Inclusion](#) is a global network that includes national governments, policymakers, development partners, and nongovernmental and research organizations. PEI is hosted by the World Bank's Social Protection and Jobs Global Practice and seeks to formalize partnerships now that will solidify an economic inclusion network that is global and far-reaching. PEI partners help develop economic inclusion programs and contribute to evidence-based good practices that can be adapted to local conditions by governments and local or international agencies. Through their work, each partner is helping build a platform that will refine and enable the sharing of cutting-edge knowledge about what works in economic inclusion.



Subscribe to our newsletter [here](#)

Partnership for Economic Inclusion c/o World Bank Group 1818 H Street, N.W.
MSN G8-800 . Washington, DC 20433

Privacy Policy

The content in this E-bulletin is copyrighted. Requests to reproduce it, in whole or in part, should be addressed to peimt@worldbank.org. For more information visit our website:<http://www.peiglobal.org>